

DRIVE 5 CURVE DATA  
P.I. = STA. 5+45.39  
 $\Delta = 78^\circ 23' 25''$  RT  
 $D_c = 229^\circ 10' 59''$   
 $R = 25.00'$   
 $T = 20.39'$   
 $L = 34.2'$   
 $E = 7.26'$

DRIVE 11 CURVE DATA  
P.I. = STA. 11+52.61  
 $\Delta = 85^\circ 14' 32''$  LT  
 $D_c = 190^\circ 59' 09''$   
 $R = 30.00'$   
 $T = 27.61'$   
 $L = 44.63'$   
 $E = 10.77'$

DRIVE 5 CURVE DATA  
P.I. = STA. 5+79.62  
 $\Delta = 78^\circ 27' 46''$  LT  
 $D_c = 229^\circ 10' 59''$   
 $R = 25.00'$   
 $T = 20.41'$   
 $L = 34.24'$   
 $E = 7.27'$

DRIVE 11 CURVE DATA  
P.I. = STA. 12+00.28  
 $\Delta = 91^\circ 13' 15''$  RT  
 $D_c = 190^\circ 59' 09''$   
 $R = 30.00'$   
 $T = 30.65'$   
 $L = 47.76'$   
 $E = 12.89'$

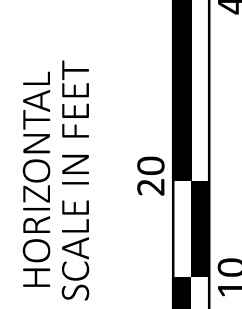
CURVE DATA  
P.I. = STA. 0+00.00  
 $\Delta = 360^\circ 00' 00''$  LT  
 $D_c = 81^\circ 51' 04''$   
 $R = 70.00'$   
 $T = 0.00'$   
 $L = 439.82'$   
 $E = 0.00'$   
 $E_{max} = N.C.$

CURVE DATA  
P.I. = STA. 200+84.93  
 $\Delta = 02^\circ 01' 58''$  RT  
 $D_c = 12^\circ 00' 00''$   
 $R = 477.47'$   
 $T = 8.47'$   
 $L = 16.94'$   
 $E = 0.08'$   
 $E_{max} = N.C.$

CURVE DATA  
P.I. = STA. 201+53.51  
 $\Delta = 01^\circ 31' 01''$  LT  
 $D_c = 07^\circ 30' 00''$   
 $R = 763.94'$   
 $T = 10.11'$   
 $L = 20.22'$   
 $E = 0.07'$   
 $E_{max} = N.C.$

CURVE DATA  
P.I. = STA. 400+98.40  
 $\Delta = 05^\circ 09' 11''$  LT  
 $D_c = 12^\circ 00' 00''$   
 $R = 477.47'$   
 $T = 21.49'$   
 $L = 42.94'$   
 $E = 0.48'$   
 $E_{max} = N.C.$

CURVE DATA  
P.I. = STA. 310+35.69  
 $\Delta = 02^\circ 44' 36''$  LT  
 $D_c = 12^\circ 00' 00''$   
 $R = 477.47'$   
 $T = 11.43'$   
 $L = 22.86'$   
 $E = 0.14'$   
 $E_{max} = N.C.$



ROUNDABOUT PLAN  
STA. 0+00 TO STA. 4+25

DESIGN AGENCY

AECOM

DESIGNER

VHP

REVIEWER

NSP 07/10/23

PROJECT ID

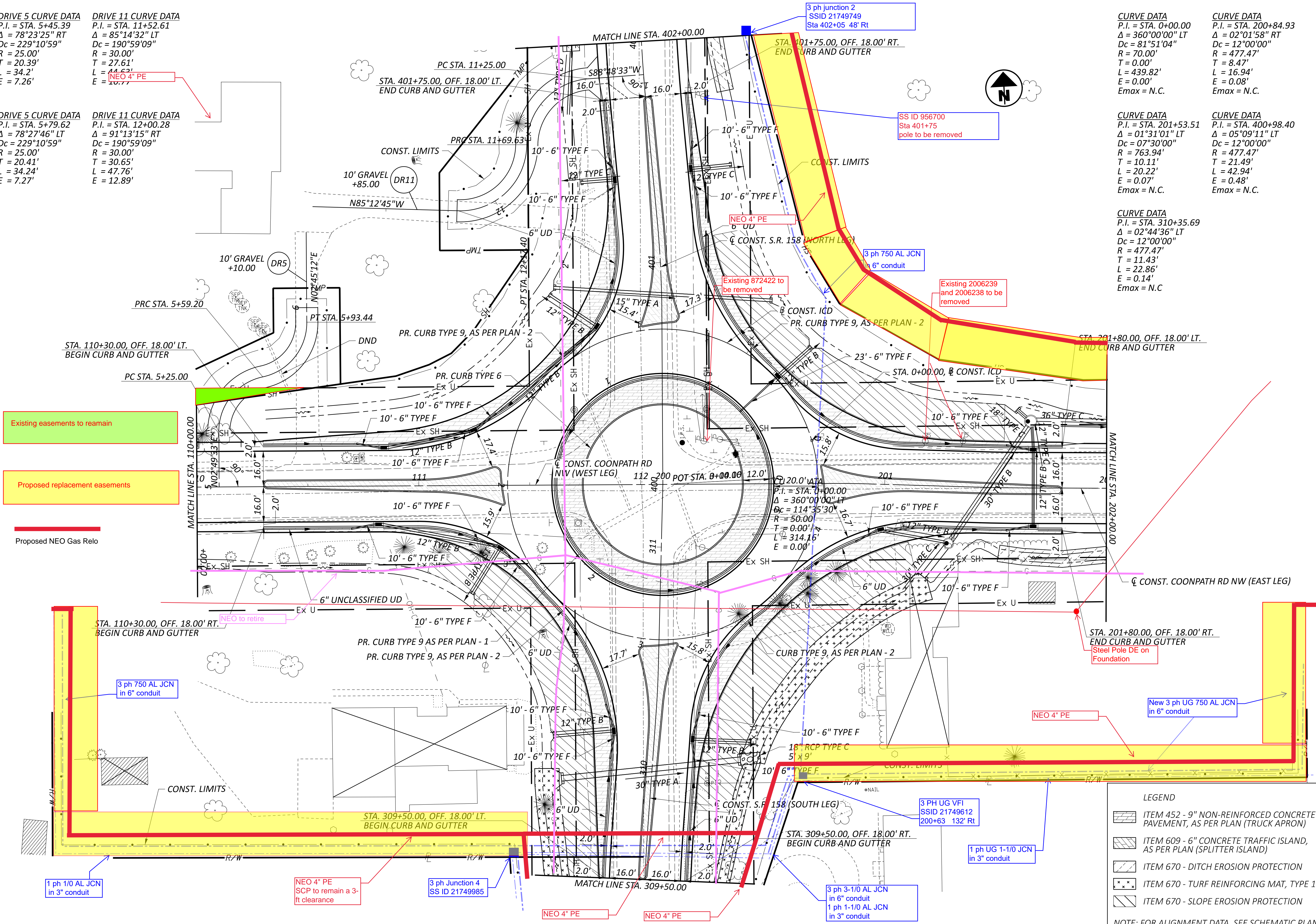
111621

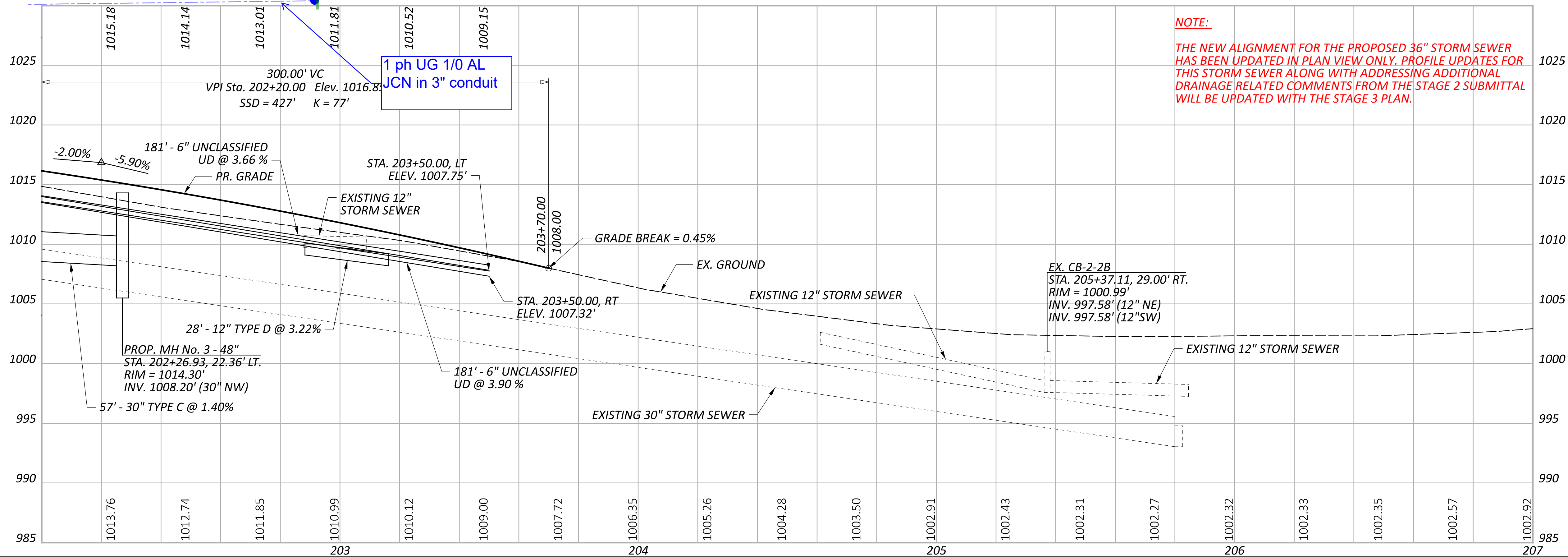
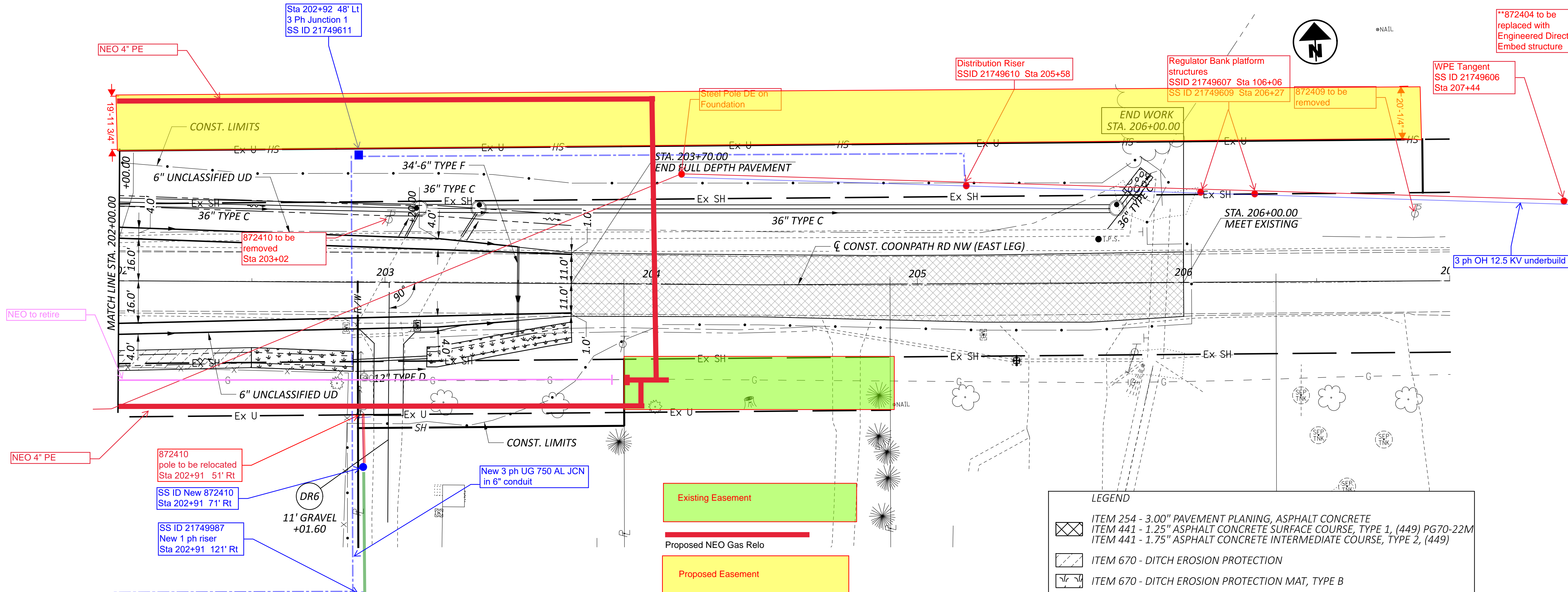
SHEET

P.19

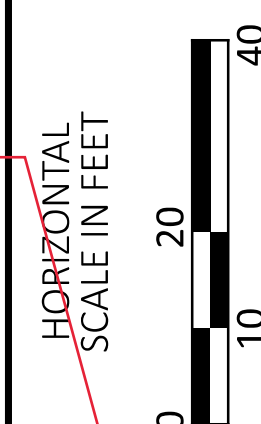
TOTAL

86





COONPATH RD PLAN AND PROFILE  
STA. 202+00 TO END WORK



DESIGN AGENCY

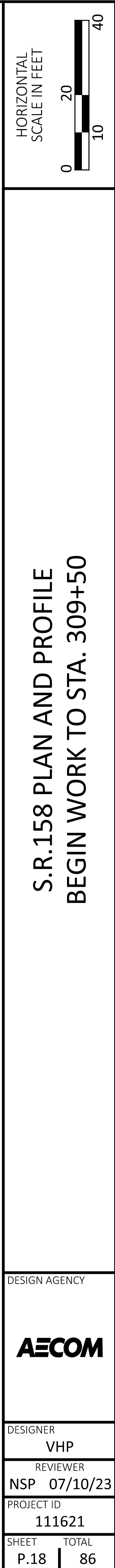
**AECOM**

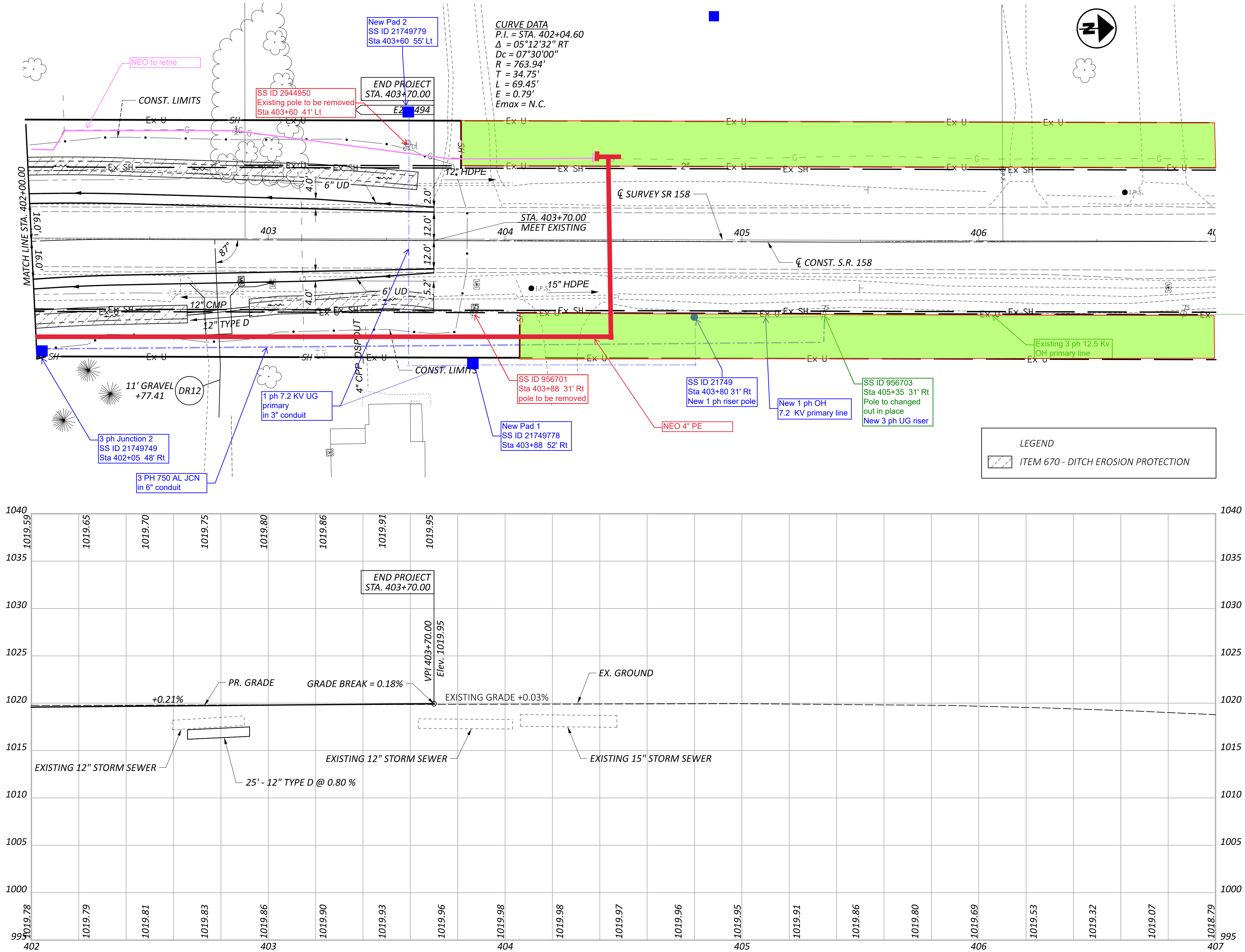
DESIGNER  
VHP

REVIEWER  
NSP 07/10/23

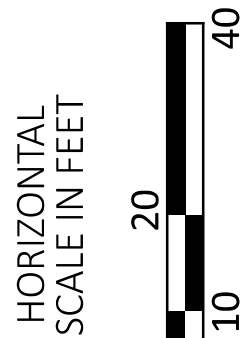
PROJECT ID  
111621

SHEET TOTAL  
P.24 86





S.R. 158 PLAN AND PROFILE  
STA. 402+00 TO END WORK



DESIGN AGENCY

**AECOM**

DESIGNER

VHP

REVIEWER

NSP 07/10/23

PROJECT ID

111621

SHEET

P.22

TOTAL

86